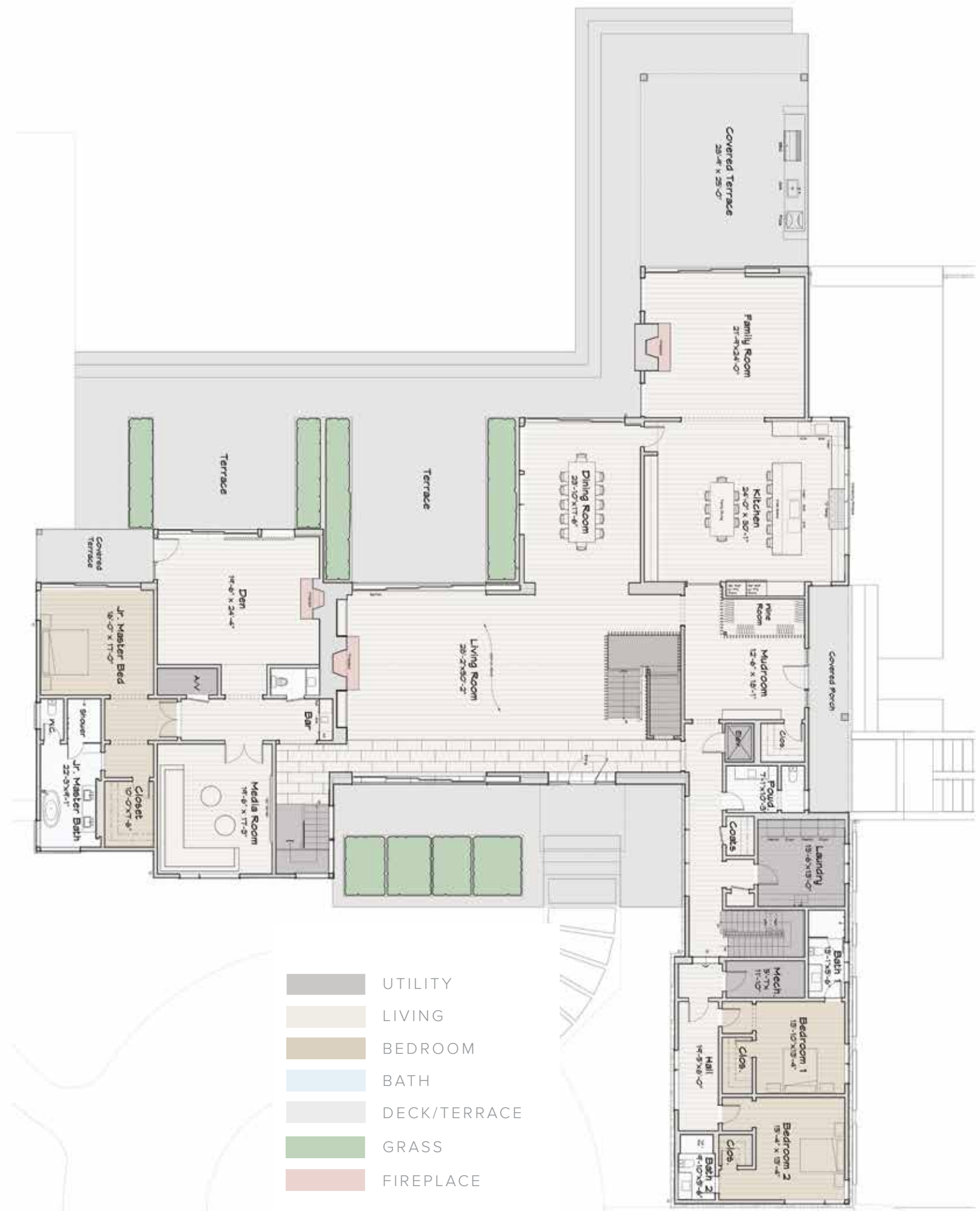


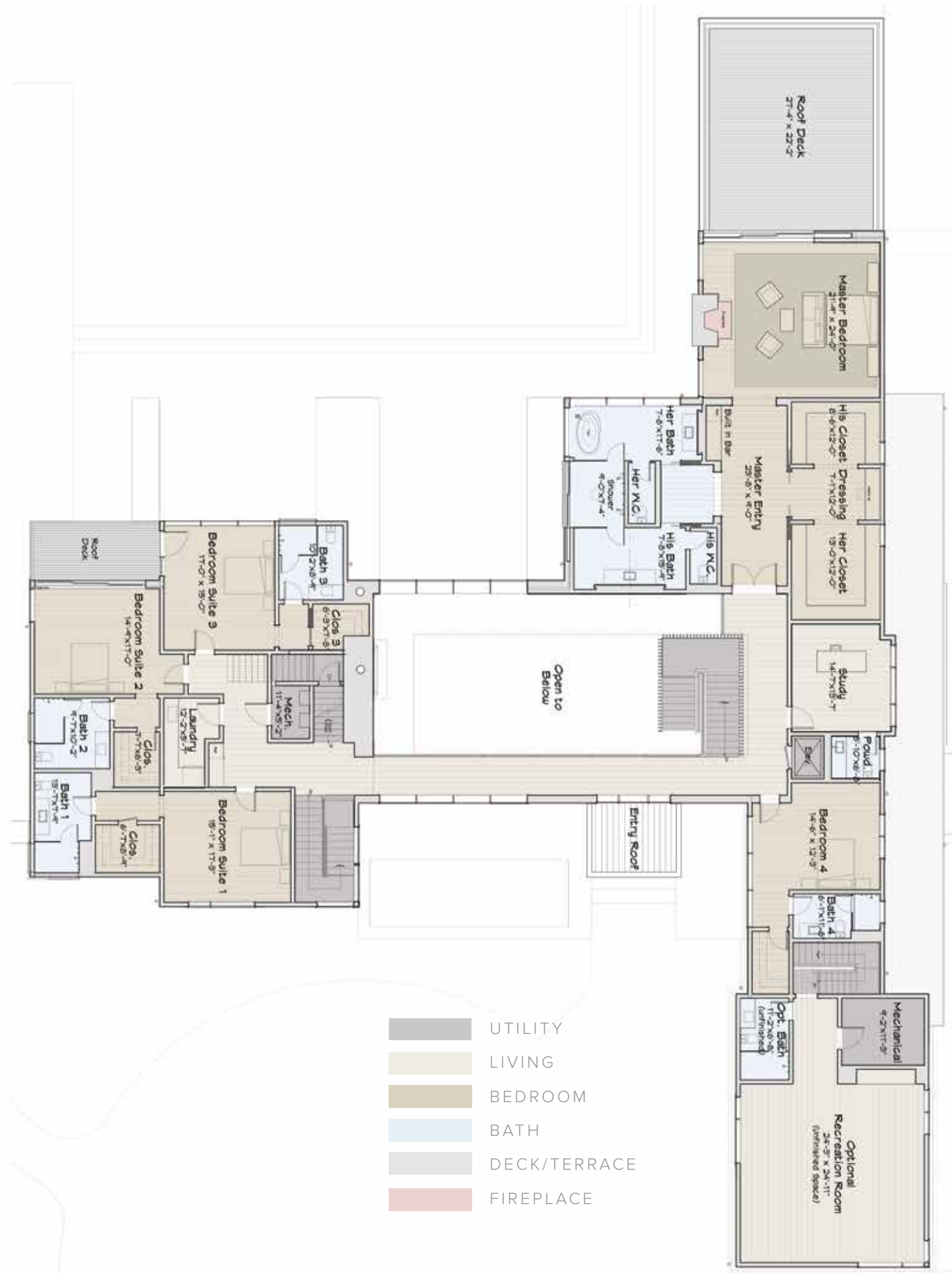
**91 FOWLER STREET, SOUTHAMPTON, NY**  
**FIRST LEVEL**

- 7,382 SF+/-
- 997 SF+/- of Covered Terrace Space
- 11' Ceilings
- First Level Water Views
- Double Height Entry Foyer with Madras Gray Stone Floors
- Custom Staircase with Wood Slats, Glass Railing, and Floating White Oak Risers
- 28'-2"x50'-2" Double Height Living Room with:
  - Motorized Exterior Glass Pocket Doors Front and Back
  - Access to Outdoor Terrace
  - Wire Brushed Natural White Oak Wood Walls
  - Stone Hearth Fireplace
  - Built-in Bookshelves
- 23'-10"x17'-6" Dining Room with Wood Walls
- 21'-9"x24' Family Room with:
  - Stone Hearth Fireplace
  - Access to Covered Outdoor Terrace with Barbeque, Pizza Oven, and Kitchenette
- 19'-6"x24'-4" Den/Entertaining Room with Fireplace and Access to Outdoor Terrace
- 19'-6"x17'-3" Media Room
- Wet Bar
- 24'x30'-1" Kitchen with:
  - Breakfast Area
  - White Lacquer Cabinetry
  - Calacatta Lincoln Countertops
  - Touch-to-Open Cabinet System
  - Custom 72" Wide Miele Cooktop
- Wine Room with Wood Slats and Glass
- 16'x17' Jr. Master Suite with:
  - Entrance Foyer
  - Walk-In Closet
  - Floor-to-Ceiling Dolomite Bathroom with Soaking Tub, Glass-Enclosed Shower, and Water Closet
  - Private Covered Terrace
- 13'-10"x13'-4" Bedroom with Private Bathroom and Closet
- 15'-4"x13'-4" Bedroom with Private Bathroom and Closet
- 13'-6"x13' Laundry Room with 4 Machines
- 12'-6"x18'-1" Mudroom with Access to Outdoor Covered Terrace
- Floating Staircase over a Bed of Mexican River Rocks, with White Oak Risers
- 2 Powder Rooms



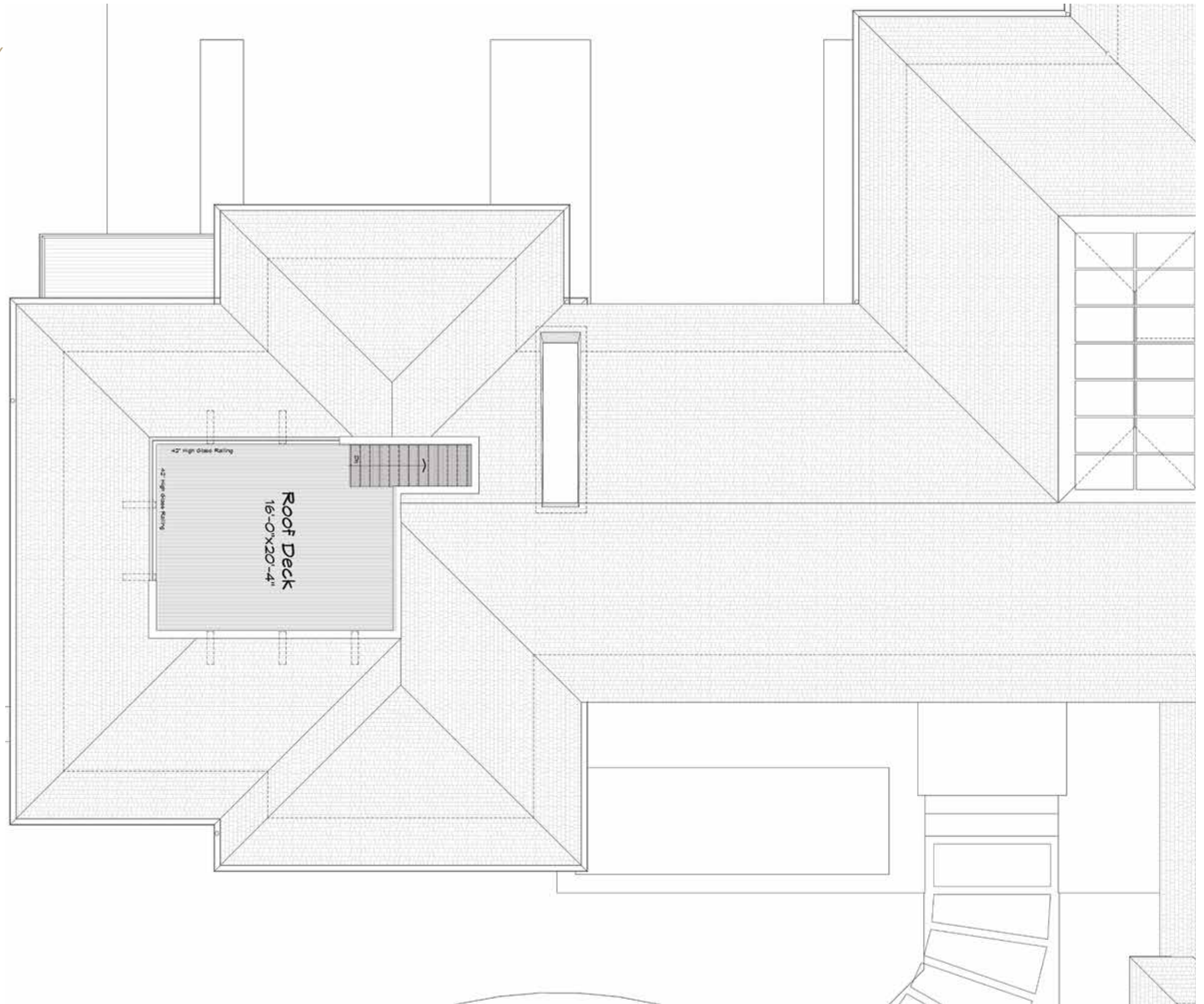
**91 FOWLER STREET, SOUTHAMPTON, NY**  
**SECOND LEVEL**

- 4,780 SF+/-
- 9' Ceilings
- 21'-9"x24' Opulent Master Suite with:
  - Entrance Foyer
  - Dual Walk-in Closets, One with Vanity-Area
  - Wood Burning Fireplace
  - Concession Area
  - Separate His & Her Bathrooms with Marble Slabs, Soaking Tub, Two Separate Rain Showers in One Glass Enclosure, Floating Vanity Sinks, and Dual Water Closets
  - Private Master Terrace Featuring Panoramic Pond and Ocean Views, and Optimal Western Facing Sunsets
- 16'-8"x13'-7" Study with Powder Room
- 5'-1"x17'-3" Bedroom with Private Bathroom and Closet
- 14'-9"x17' Bedroom with Private Bathroom, Closet, and Shared Outdoor Terrace
- 17'x15'-1" Bedroom with Private Bathroom, Closet, and Shared Outdoor Terrace
- 14'-6"x12'-3" Bedroom with Private Bathroom and Closet
- 800 SF+/- Bonus Room (Framed with Plumbing) with the Option for:
  - Additional Bedroom
  - Bunkroom
  - Recreation Room
  - Yoga Studio
  - Gym
- Laundry Room



91 FOWLER STREET, SOUTHAMPTON, NY  
ROOFTOP DECK

- 16'x20'-4" Rooftop Deck with Glass Railing and Pond and Ocean Views from Sunrise to Sunset

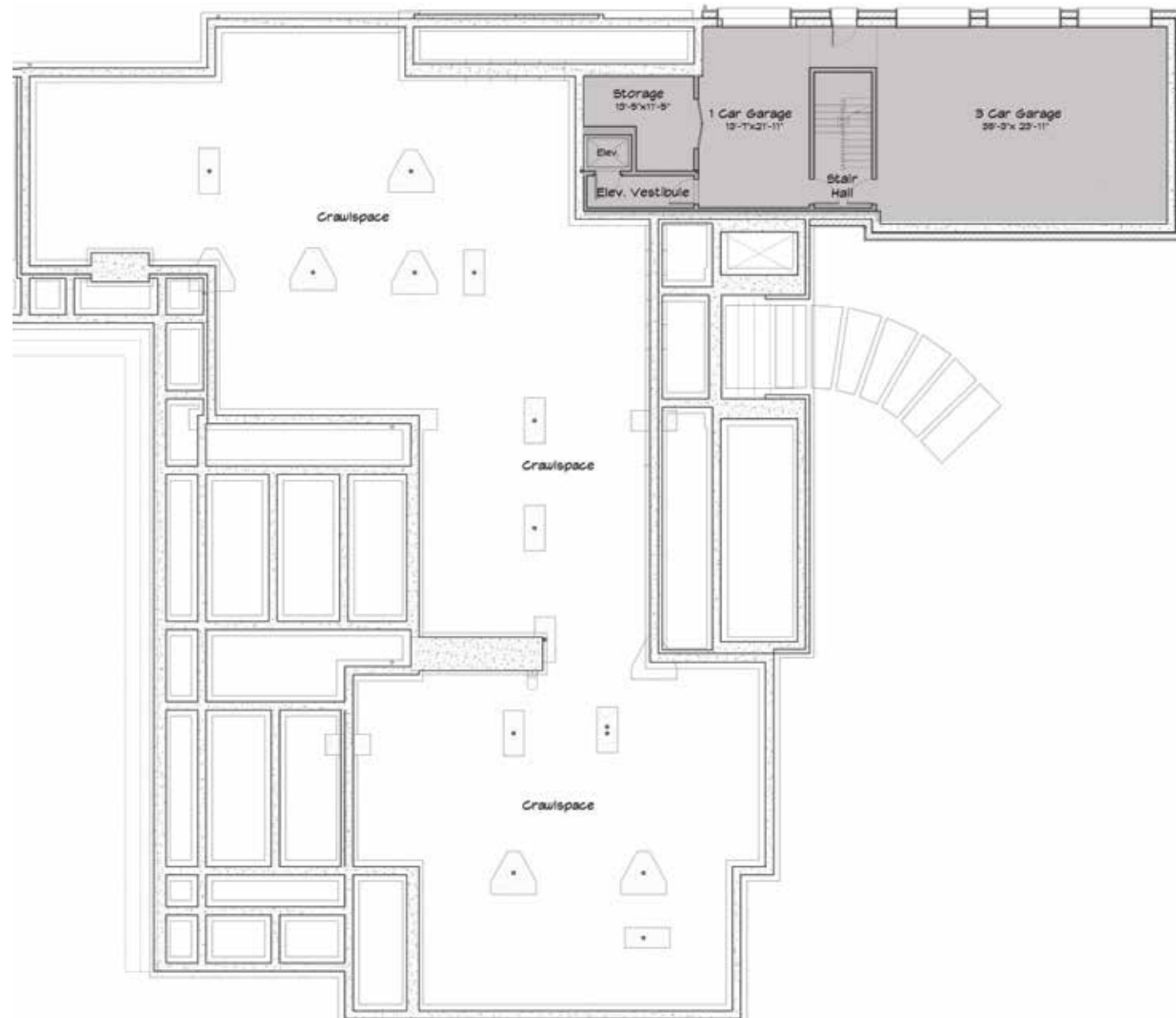


- UTILITY
- LIVING
- BEDROOM
- BATH
- DECK/TERRACE



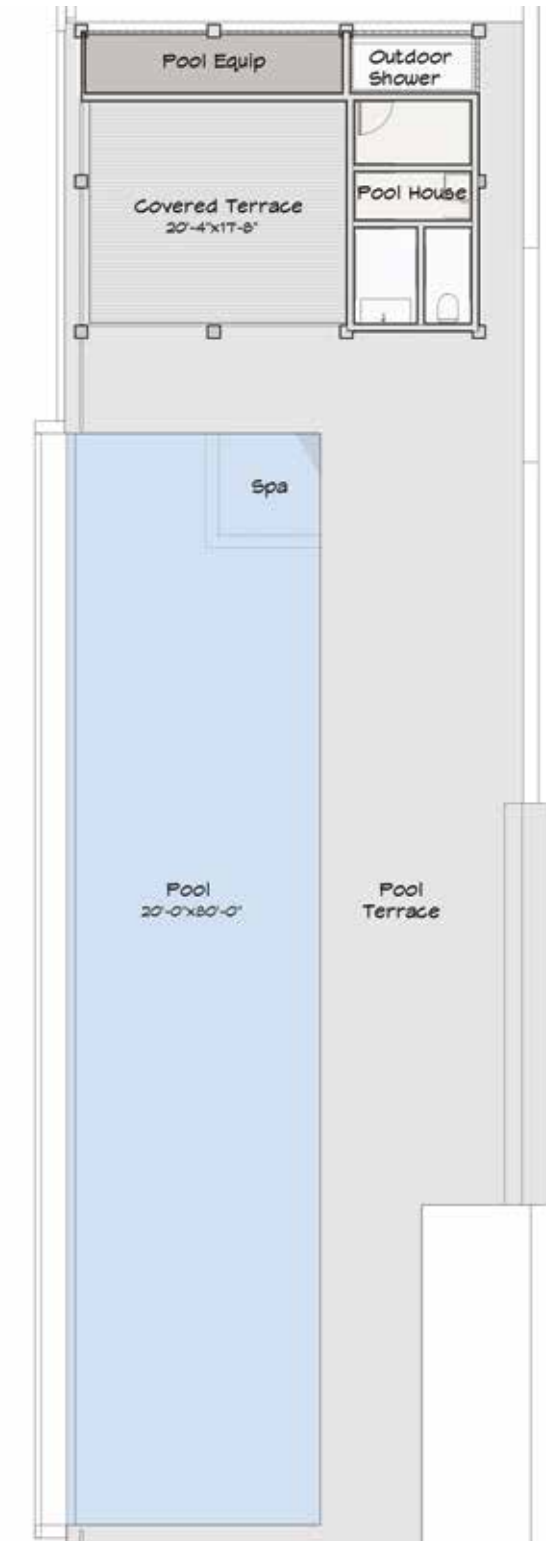
91 FOWLER STREET, SOUTHAMPTON, NY  
LOWER LEVEL

- 1,889 SF+/- Heated Attached 4-Car Garage
- Storage
- Elevator Access



91 FOWLER STREET, SOUTHAMPTON, NY  
POOL & POOL HOUSE

- Pool House with Changing Room, Full Bath, Kitchenette and Solar Panel Roof
- 21'-4"x24'-6" Pool House Covered Terrace
- Custom Infinity Edge Heated Gunite
- 20' x 80' Pool and 8' x 8' Spa



- UTILITY
- LIVING
- BEDROOM
- BATH
- DECK/TERRACE
- POOL

